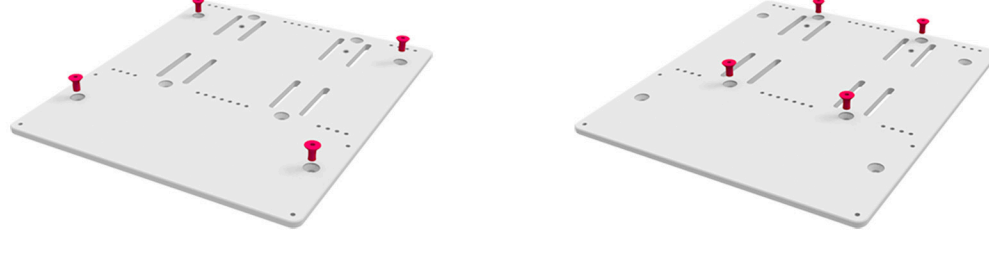


Pedal Plate Installation

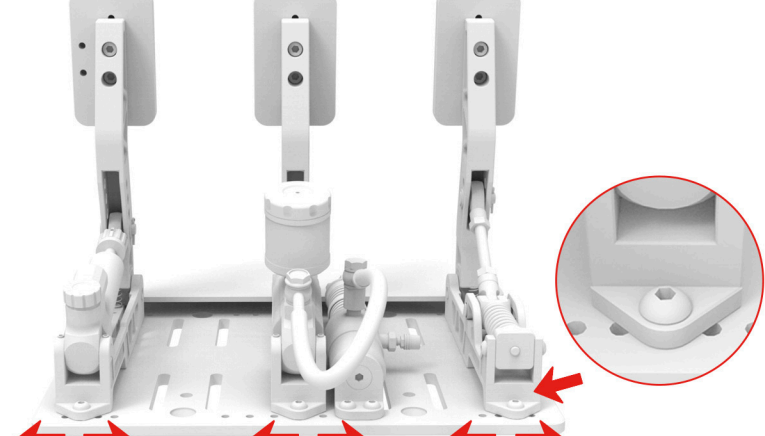
Mount the pedal plate onto your cockpit using the large countersunk holes.

Mounting holes for different mounting brackets



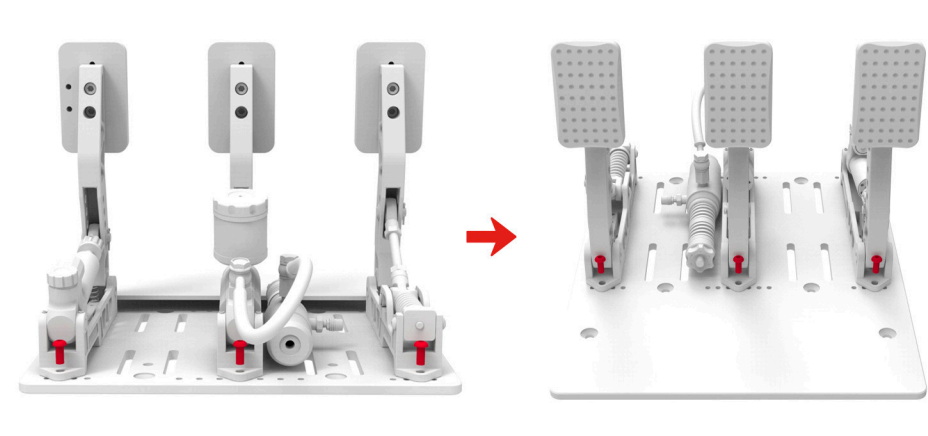
Spacing Adjustment

Place the pedals onto the pedal plate and adjust the pedals to your preferred position.



Pedals Installation

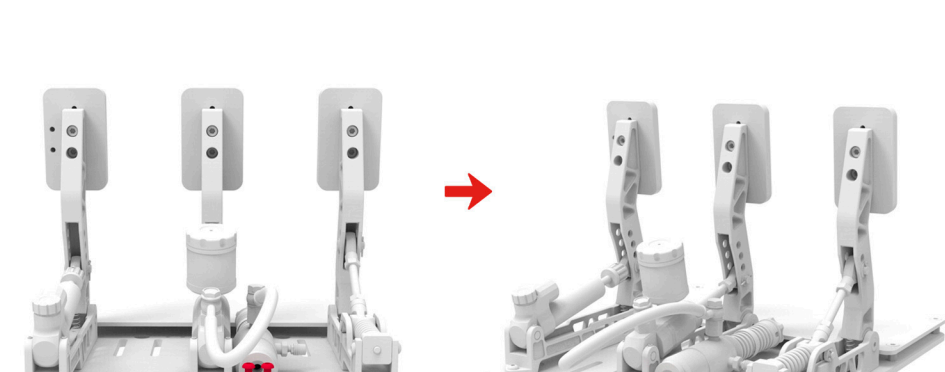
Insert **M6*14 bolts** and tighten until secure.



Auxiliary Pump Installation

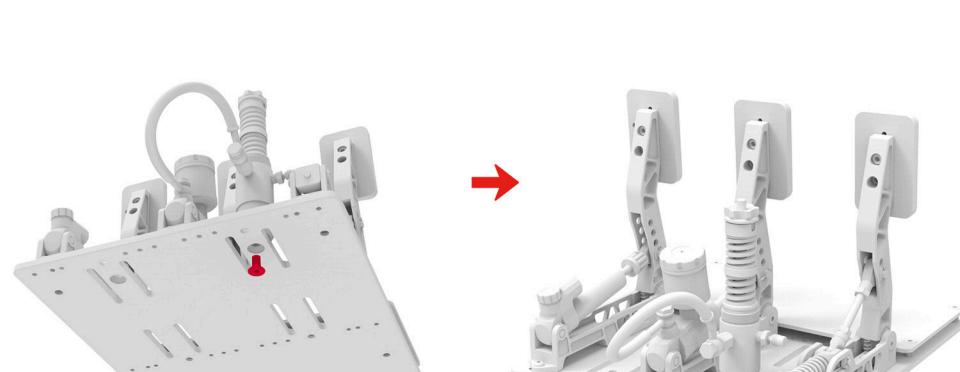
Horizontal Mounting:

Mount the **L-shaped bracket** onto the pedal plate using **M6*14 bolts**. Next, mount the **auxiliary pump** onto the **L-shaped bracket** using an **M8*16 bolt**.



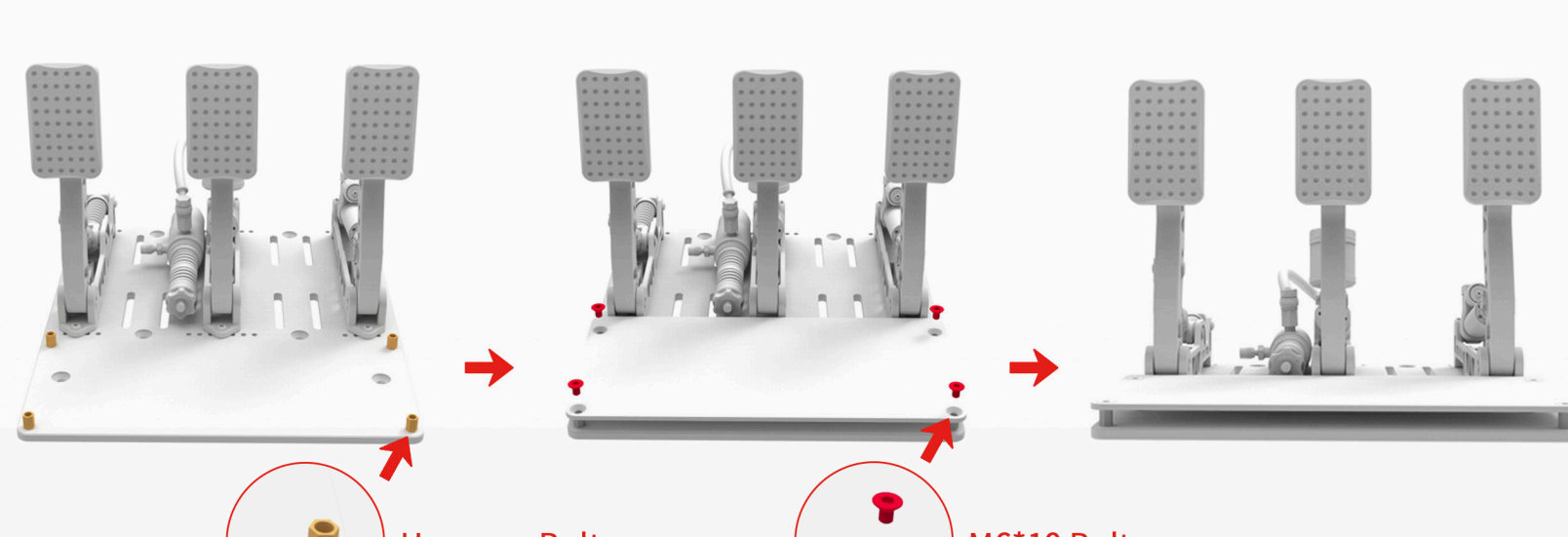
Vertical Mounting:

Place the auxiliary pump **vertically** onto the pedal plate. Insert an **M8*16 bolt** through the bottom of the plate and tighten until secure.



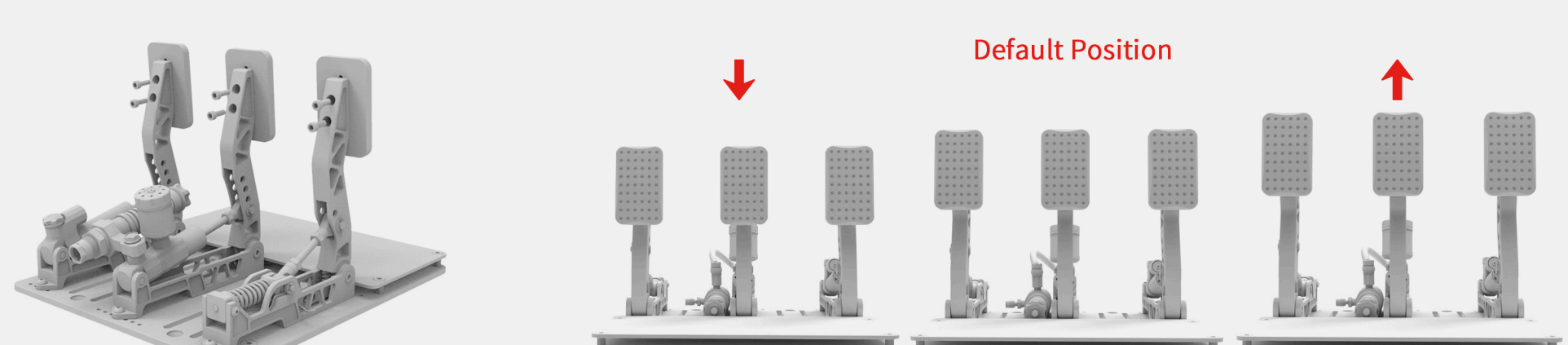
Heel Support Plate Installation

Insert the **M6*12 Hexagon bolts** into the pedal plate and tighten. Put the **Heel Support Plate** over the **Hexagon bolts**, making sure to line up each hole. Insert **M6*10 bolts** and tighten until secure.



Pedal Pad Adjustment

Remove the bolts to adjust pad position. The pedal pads can be adjusted, **up or down** according to your preference.

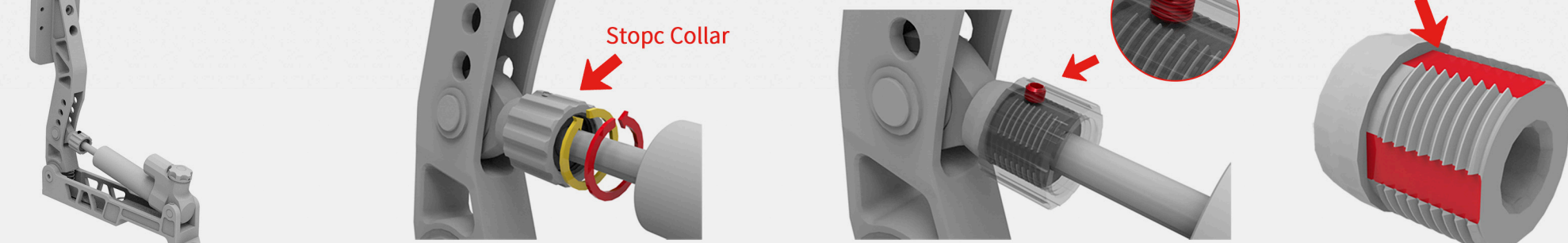


THROTTLE PEDAL

Stop Collar Adjustment

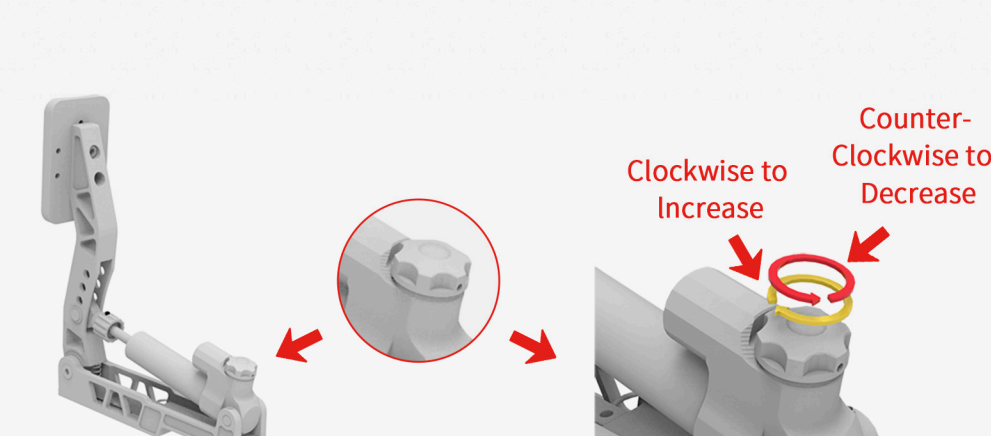
Loosen the **Jackscrew** without removing it, then rotate the **Stop Collar** to your desired position. Tighten the **Jackscrew** into 1 of the 4 available **Socket Areas** to secure the **Stop Collar**.

****Caution:** Make sure to only tighten the jackscrew into the **Socket Area** (Top / Bottom / Left / Right). Failure to do so may **damage** the threads for the Stop Collar.



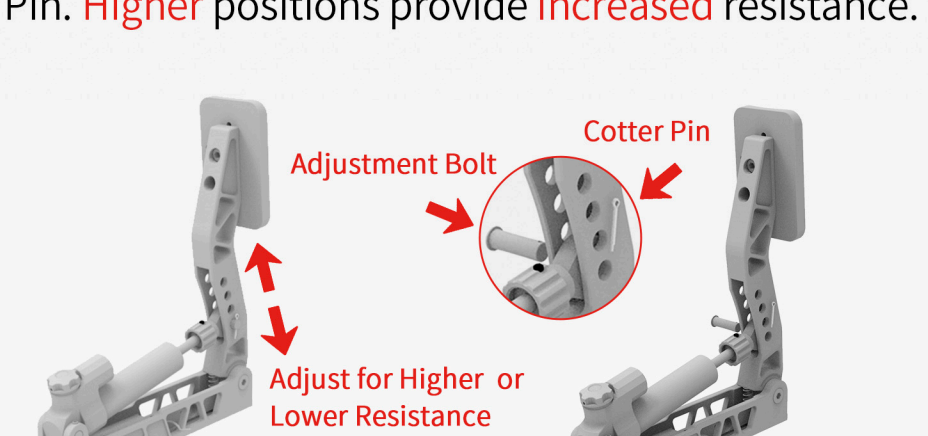
Throttle Damping Adjustment

Rotate the "Damping Valve" **Clockwise to Increase** Damping and **Counter-Clockwise to Decrease** Damping.



Throttle Pedal Travel Adjustment

Remove the **Cotter Pin**, then pull out the **Adjustment Bolt**. Adjust the angle of the piston to your preferred position. **Re-install** the Adjustment Bolt and Cotter Pin. **Higher** positions provide **increased** resistance.



Optional Accessory: Throttle Side Plate Installation

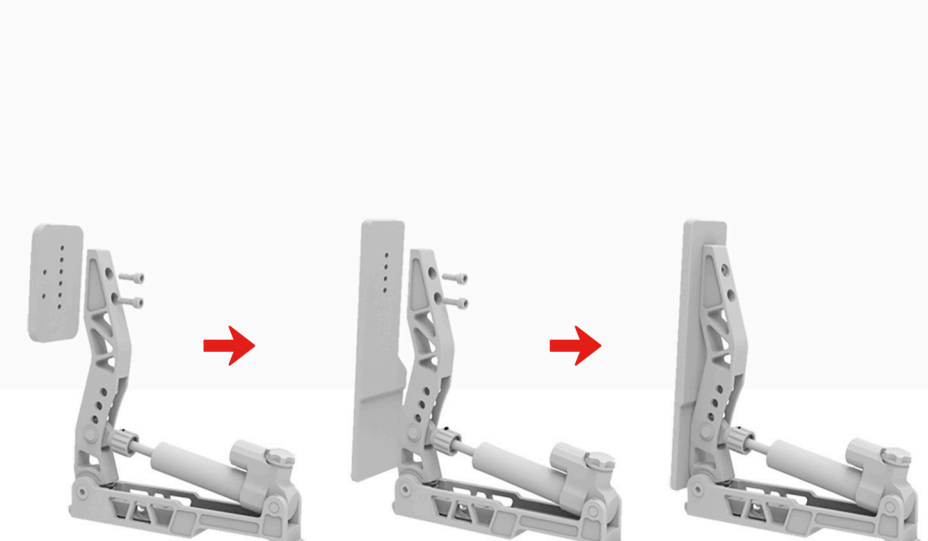
Align the **Side Plate** to the 2 holes located on the back of the Throttle Pad. Insert 2 **M6*8 bolts** and tighten.

The plate can be adjusted **Left or Right** depending on your preference.



Optional Accessory: Throttle Long Pad Installation

Remove the **two M6*16 bolts**. Replace the default pad with the Long Pad. Re-insert the **M6*16 bolts** and tighten.



BRAKE PEDAL

Brake Spring Replacement

Rotate the nut **counter-clockwise** to loosen it. Remove the **Nut, Sensor, Washer, and Spring**. Using the chart below, select a spring combo you would like to install. **Re-install** everything in reverse order (Spring / Washer / Spring / Washer / Sensor / Nut).

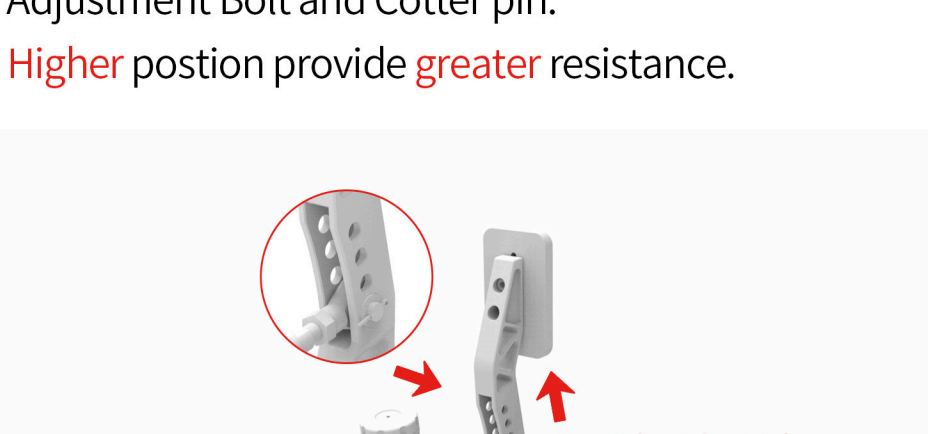


Spring Combo Recommendations

Color	Color	Braking force Intervals	Recommendation		
Yellow	Extra Small	Yellow	Yellow	Extra Small	Family Cars
Blue	Small	Yellow	Blue	Small	Family Cars
Red	Medium	Yellow	Red	Medium	Sport cars
Green	Large	Yellow	Green	Extra Small - Medium	Higher level Sport Cars
Yellow	Red	Blue	Red	Small - Medium	Sport Cars
Blue	Red	Red	Red	Medium - Medium	Sport Cars
Red	Red	Blue	Green	Small - Large	Mid-level Racecars
Blue	Green	Red	Green	Medium - Large	Higher level Racecars

Brake Pedal Travel Adjustment

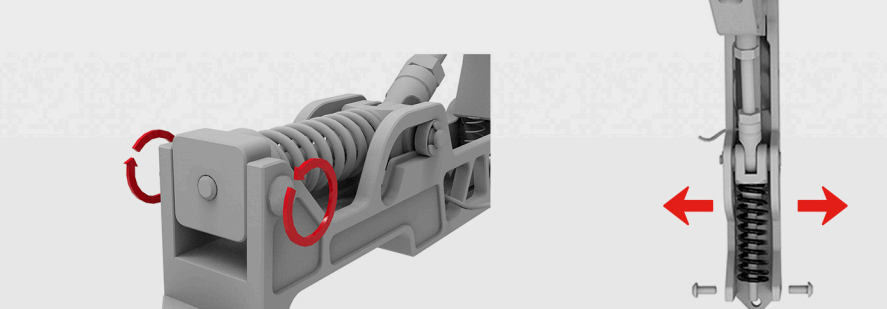
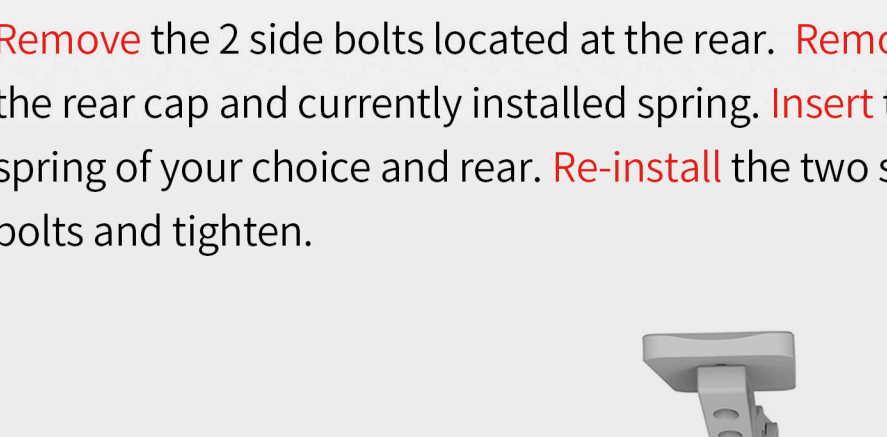
Remove the Cotter pin and **pull out** the Adjustment Bolt. Adjust the position to your preferred position. **Re-install** the Adjustment Bolt and Cotter pin. **Higher** position provide **greater** resistance.



CLUTCH PEDAL

Clutch Spring Replacement

Remove the 2 side bolts located at the rear. **Remove** the rear cap and currently installed spring. **Insert** the spring of your choice and rear. **Re-install** the two side bolts and tighten.

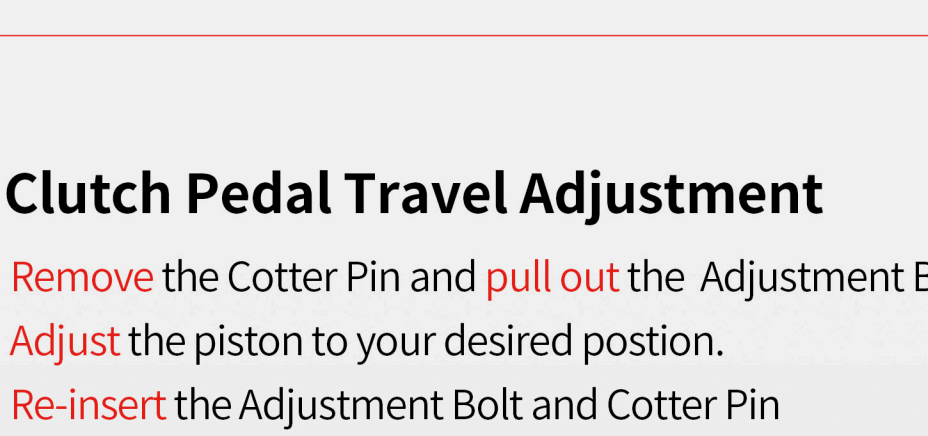


Spring Force Levels:

Extra Heavy
Heavy
Medium
Light

Clutch Pedal Travel Adjustment

Remove the Cotter Pin and **pull out** the Adjustment Bolt. **Adjust** the piston to your desired position. **Re-insert** the Adjustment Bolt and Cotter Pin



The **Upper** position means that you will need to apply **greater** force to reach the end of the pedal travel.

